



Invisible Retainer Pg. 12



Multi-Colored Mouthguard Pg. 13



Temporary Pg. 11



Indirect Bonding Tray Pg. 12



Model Duplication Pg. 10



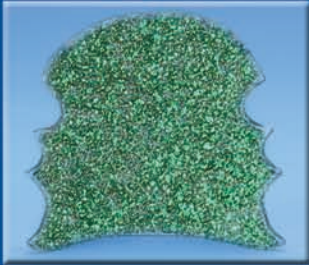
Cool Orange Biocryl Pg. 9



Positioner Pg. 13




Soft Splint / Nightguard Pg. 10



Green Glitter Biocryl Pg. 9

Heating Times & Applications for Thermal Forming Materials



A guide for Biostar® and Ministar® users



Custom Tray Pg. 11



Splint Pg. 10



Bleaching Tray Pg. 11



Zebra Biocryl Pg. 9



Thermal Forming Material Heating Times & Applications Guide



Biostar® VI with
Scan Technology - Page 1



Biostar® V - Page 1



Biostar® IV - Page 3



MiniSTAR S® - Page 5



MiniSTAR® - Page 7

Table of Contents

Thermal Forming Material Heating Times

Biostar VI w/ scan Technology	Pg. 1&2
Biostar V	Pg. 1&2
Biostar IV	Pg. 3
MiniSTAR S	Pg. 5
MiniSTAR	Pg. 7

Applications for Thermal Forming Materials	Pg. 9
Biostar Troubleshooting	Pg. 14
MiniSTAR Troubleshooting	Pg. 15

Biostar S & N owners can contact Great Lakes customer service department for assistance with heating times.

Use the Biostar or MiniSTAR, along with our extensive selection of high quality, break resistant materials to fabricate:

- Hawley Retainers
- Retainers with Bite Plate
- Expansion Appliances
- Bonded RPEs
- Invisible Retainers
- Custom Impression Trays
- Temporaries for Crown & Bridge
- Sleep Appliances
- TMJ Splints
- Indirect Bonding Trays
- Model Duplication
- Mouthguards/Dual Laminate
- Nightguards
- Positioners
- Bleaching & Fluoride Trays
- Deprogrammers

See Page 9 for a complete list of materials that can be used to make many of the appliances listed above.

Great Lakes Orthodontics, Ltd. is the only authorized repair service for the BIOSTAR® and MiniSTAR® machines in the U.S.

Biostar® V and Biostar® VI with Scan Technology

All times are stated in seconds and based on 6 bars of pressure or 87 psi. Heating times listed should only be used as a general guideline. Variables such as model size and room temperature may affect heating times.



Use **Code 344** for Tiger, Zebra, & Desert Camouflage material as well as with 3mm purple and black mouthguard material. Use **Code 414** for 2mm purple mouthguard material.

Fabrication

Tip...

We recommend using the platform to form all soft or semi-soft material and pellets when forming hard material.

Contact Great Lakes Products Customer Service at 1-800-828-7626 with any questions.

Mouthguard Material	1mm	2mm	3mm	4mm
Clear	30	60	90	120
Red	---	60	90	---
Blue	---	60	90	---
Yellow	---	60	90	---
Orange	---	60	90	---
White	---	---	90	---
Black (Use code indicated)	---	133	344	---
Purple (Use code indicated)	---	414	344	---
Green	---	60	90	---

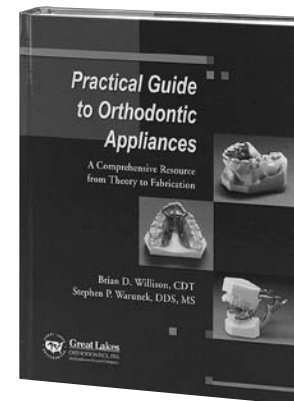
Bioplast Material	1.5mm	2mm	3mm
Clear	50	60	90
Clear Yellow	50	60	90
Clear Blue	50	60	90
Multi Color	---	60	90

Color Biocryl Resin	2mm	2.5mm	3mm
Pink	90	110	120
Yellow	90	--	--
Red	90	110	--
Green	90	110	--
Light Blue	60	--	90
Dark Blue	90	110	120
Purple	90	110	--
Pattern Biocryl			
Tiger (Use code indicated)	344		
Zebra (Use code indicated)	344		
Desert Camouflage (Use code indicated)	344		
Polka Dot	90		
Rainbow	90		
Summer Shades Biocryl			
Hot Pink	90		
Fresh Limon	90		
Coral Red	90		
Cool Orange	90		
Sky Blue	90		
Glitter Biocryl			
Opalescent	90		
Radiant Red	90		
Pacific Blue	90		
Starlight Silver	90		
Emerald Green	90		
Multicolor	90		

Clear Splint Biocryl	
0.5mm	20
0.75mm	25
1mm	35
1.5mm	50
2mm	60
2.5mm	75
3mm	90

Invisacrly & Endure	
Invisacrly A 0.030 in/.75mm	25
Invisacrly A 0.040 in/1mm	35
Invisacrly B 0.025 in/.5mm	40
Invisacrly B 0.035 in/.8mm	60
Invisacrly C 0.040 in/1mm*	70
Endure 0.030 in/.75m	30
Endure 0.040 in/1mm	35

* Use Code 207 (incl. 300 seconds of cooling time)



070-002

Great Lakes Practical
Guide to Orthodontic Appliances
A comprehensive resource from theory to fabrication

Brian D. Willison, CDT
Stephen P. Warunek, DDS, MS

This illustrated guide provides comprehensive, current, and reliable information for orthodontic technicians who are interested in enhancing their skills and learning new techniques.

Super Imprelon*, Imprelon & Durasoft*	* Requires heat drying prior to use.
Super Imprelon .75mm	45
Super Imprelon 1mm	50
Imprelon 3mm Clear	80
Imprelon 3mm White	70
Durasoft 1.8mm	80
Durasoft 2.5mm	100

Copyplast, Hardcast & Isofolan	
Copyplast .5mm	30
Copyplast 1mm	50
Copyplast 1.5mm	70
Hardcast .4mm	45
Hardcast .6mm	50
Hardcast .8mm	75
Isofolan 0.10mm	25

Miscellaneous	
Blue Heavy Weight 0.125 in/3mm	60
Pink Tray 0.080 in/2mm	60
Pink Base Plate 0.060 in/1.5mm	40
Coping Material 0.020 in/.5mm	50
Temporary Splint 0.020 in/.5mm	25

Biostar Code Key			
Time (Seconds)	Code	Time (Seconds)	Code
20	103	65	194
25	113	70	204
30	123	75	214
35	133	80	224
40	144	90	234
45	154	100	244
50	164	110	254
60	184	120	264

Note: Do not remove formed material from model until completely cooled.

Biostar® IV

All times are stated in seconds and based on 4-5 bars of pressure or 60-75psi.
Heating times listed should only be used as a general guideline. Variables such as model size and room temperature may affect heating times.



Fabrication Tip...

To prevent poor adaptation, make sure the pellet cup holes are free from pellets. Use a .036" diameter (or smaller) wire to open plugged holes.

Contact Great Lakes Products Customer Service at 800-828-7626 with any questions.

Mouthguard Material	1mm	2mm	3mm	4mm
Clear	30	60	90	120
Red	---	60	90	---
Blue	---	60	90	---
Yellow	---	60	90	---
Orange	---	60	90	---
White	---	---	90	---
Black	---	50	90	---
Purple	---	60	90	---
Green	---	60	90	---

Bioplast Material	1.5mm	2mm	3mm
Clear	50	60	90
Clear Yellow	50	60	90
Clear Blue	50	60	90
Multi Color		60	90

Color Biocryl Resin	2mm	2.5mm	3mm
Pink	90	110	120
Yellow	90	---	---
Red	90	110	---
Green	90	110	---
Light Blue	60	--	90
Dark Blue	90	110	120
Purple	90	110	---
Pattern Biocryl			
Tiger	90		
Zebra	90		
Desert Camouflage	90		
Polka Dot	90		
Rainbow	90		
Summer Shades Biocryl			
Hot Pink	90		
Fresh Limon	90		
Coral Red	90		
Cool Orange	90		
Sky Blue	90		
Glitter Biocryl			
Opalescent	90		
Radiant Red	90		
Pacific Blue	90		
Starlight Silver	90		
Emerald Green	90		
Multicolor	90		

Clear Splint Biocryl	
0.5mm	20
0.75mm	25
1mm	35
1.5mm	50
2mm	60
2.5mm	75
3mm	90

Invisacrly & Endure	
Invisacrly A 0.030 in/.75mm	25
Invisacrly A 0.040 in/1mm	35
Invisacrly B 0.025 in/.5mm	40
Invisacrly B 0.035 in/.8mm	60
Invisacrly C 0.040 in/1mm	70
Endure 0.030 in/.75m	30
Endure 0.040 in/1mm	35



225-040

Super Imprelon*, Imprelon & Durasoft*	* Requires heat drying prior to use.
Super Imprelon .75mm	45
Super Imprelon 1mm	50
Imprelon 3mm Clear	80
Imprelon 3mm White	70
Durasoft 1.8mm	80
Durasoft 2.5mm	100

Copyplast, Hardcast & Isofolan	
Copyplast .5mm	30
Copyplast 1mm	50
Copyplast 1.5mm	70
Hardcast .4mm	45
Hardcast .6mm	50
Hardcast .8mm	75
Isofolan 0.10mm	25

Great Lakes 6 Liter Adjustable Heated Pressure Pot

- Produces a dense, strong, clear acrylic by combining moisture, heat, and pressure at a constant rate
- Comfortably fits full-size articulators
- Quick release air valve
- Built-in pressure gauge

Miscellaneous	
Blue Heavy Weight 0.125 in/3mm	90
Pink Tray 0.080 in/2mm	60
Pink Base Plate 0.060 in/1.5mm	40
Coping Material 0.020 in/.5mm	50
Temporary Splint 0.020 in/.5mm	25

Biostar Code Key			
Time (Seconds)	Code	Time (Seconds)	Code
20	103	65	194
25	113	70	204
30	123	75	214
35	133	80	224
40	144	90	234
45	154	100	244
50	164	110	254
60	184	120	264

Note: Do not remove formed material from model until completely cooled.

MiniSTAR S®

All times are stated in seconds and based on 3 bars of pressure or 45psi. Heating times listed should only be used as a general guideline. Variables such as model size and room temperature may affect heating times.



A screen (included with your MiniSTAR S) is used to filter intense heat applied to dark materials. Use screen with Tiger, Zebra, and Desert Camouflage material as well as with black and purple mouthguard material.

Fabrication Tip...

To get the best results for mounted models, remove the majority of pellets. Leave only enough under the model to allow air to flow. Build up the pellets, leaving exposed only the area to be covered by the material.

Contact Great Lakes Products Customer Service at 800-828-7626 with any questions.

Mouthguard Material	1mm	2mm	3mm	4mm
Clear	30	50	70	100
Red	---	50	70	---
Blue	---	50	70	---
Yellow	---	50	70	---
Orange	---	50	70	---
White	---	---	70	---
Black (screen)	---	35	60	---
Purple (screen)	---	50	60	---
Green	---	50	70	---

Bioplast Material	1.5mm	2mm	3mm
Clear	50	60	90
Clear Yellow	50	60	90
Clear Blue	50	60	90
Multi Color		60	90

Color Biocryl Resin	2mm	2.5mm	3mm
Pink	95	120	125
Yellow	90	---	---
Red	90	110	---
Green	90	110	---
Light Blue	50	--	90
Dark Blue	90	115	125
Purple	100	110	---
Pattern Biocryl			
Tiger (screen)	80		
Zebra (screen)	80		
Desert Camouflage (screen)	115		
Polka Dot	85		
Rainbow	75		
Summer Shades Biocryl			
Hot Pink	80		
Fresh Limon	80		
Coral Red	80		
Cool Orange	80		
Sky Blue	80		
Glitter Biocryl			
Opalescent	75		
Radiant Red	75		
Pacific Blue	75		
Starlight Silver	75		
Emerald Green	75		
Multicolor	75		

Clear Splint Biocryl	
0.5mm	20
0.75mm	25
1mm	35
1.5mm	50
2mm	70
2.5mm	90
3mm	110

Super Impreton*, Impreton & Durasoft*	* Requires heat drying prior to use.
Super Impreton .75mm	45
Super Impreton 1mm	50
Impreton 3mm Clear	80
Impreton 3mm White	70
Durasoft 1.8mm	80
Durasoft 2.5mm	100

Miscellaneous	
Blue Heavy Weight 0.125 in/3mm	60
Pink Tray 0.080 in/2mm	40
Pink Base Plate 0.060 in/1.5mm	30
Coping Material 0.020 in/.5mm	30
Temporary Splint 0.020 in/.5mm	30

Invisacryl & Endure	
Invisacryl A 0.030 in/.75mm	25
Invisacryl A 0.040 in/1mm	35
Invisacryl B 0.025 in/.5mm	40
Invisacryl B 0.035 in/.8mm	45
Invisacryl C 0.040 in/1mm	60
Endure 0.030 in/.75mm	25
Endure 0.040 in/1mm	35

Copyplast, Hardcast & Isofolan	
Copyplast .5mm	30
Copyplast 1mm	50
Copyplast 1.5mm	70
Hardcast .4mm	45
Hardcast .6mm	50
Hardcast .8mm	75
Isofolan 0.10mm	25



Bioplast Insulator

175-068

Insulating agent for plaster models when working with Bioplast material when fabricating mouthguards and positioners. Provides absolute transparency and smooth inner surfaces. .5 Liter



Lead Pellets (Left Photo)

5 lbs. (10 fl. oz. bottle) 010-095



Stainless Steel Pellets (Left Photo)

2.2 lbs. (13 fl. oz. bottle) 010-099

Composite Pellets (Right Photo)

1.1 lbs. (10 fl. oz. bottle) 010-122



Creme Polish

Imparts a super brilliant shine to metal and plastic appliances.

16 oz.
230-009



Metal Polish

Quickly removes scratches from the hardest metals.

1 lb. block
230-010



Tripoli

Used after pumicing, it removes scratches and prepares appliances for final polishing. A must for professional results.

1 lb. block
230-007



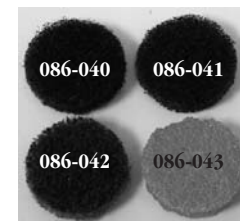
UP500 Micro Motor 150-025

Durable, constant torque handpiece ideal for heavy-duty lab work. Equipped with a 35,000 rpm variable speed motor and forward/reverse operation. Accommodates two handpieces and features power control on both the base unit and foot pedal. 220V available.

Dimo® Grinding & Finishing Wheels

Ideal for professional finishing of pressure molding materials, hard and soft plastics and metals.

- made of durable, nonwoven elastic
- minimizes unraveling
- long lasting



- Fine – cleaning and smoothing 086-040
- Medium – soft finishing of edges 086-041
- Coarse – heavy trimming 086-042
- PRO Multi-functional – grinding, smoothing, and polishing 086-043
- Mandrels 085-048

MiniSTAR®

All times are stated in seconds and based on 3 bars of pressure or 45 psi. Heating times listed should only be used as a general guideline. Variables such as model size and room temperature may affect heating times.



Fabrication Tip...

For even heating, the heating surface should be parallel to the heating element. Adjust the position of the chamber with a small screwdriver. See the manual for additional instructions.

Remember to call Great Lakes Products Customer Service at 800-828-7626 with any questions.

Mouthguard Material	1mm	2mm	3mm	4mm
Clear	30	60	90	120
Red	---	60	90	---
Blue	---	60	90	---
Yellow	---	60	90	---
Orange	---	60	90	---
White	---	---	90	---
Black	---	50	90	---
Purple	---	60	90	---
Green	---	60	90	---

Bioplast Material	1.5mm	2mm	3mm
Clear	50	60	90
Clear Yellow	50	60	90
Clear Blue	50	60	90
Multi Color		60	90

Color Biocryl Resin	2mm	2.5mm	3mm
Pink	90	110	120
Yellow	90	---	---
Red	90	110	---
Green	90	110	---
Light Blue	60	--	90
Dark Blue	90	110	120
Purple	90	110	---
Pattern Biocryl			
Tiger	85		
Zebra	85		
Desert Camouflage	90		
Polka Dot	90		
Rainbow	90		
Summer Shades Biocryl			
Hot Pink	90		
Fresh Limon	90		
Coral Red	90		
Cool Orange	90		
Sky Blue	90		
Glitter Biocryl			
Opalescent	90		
Radiant Red	90		
Pacific Blue	90		
Starlight Silver	90		
Emerald Green	90		
Multicolor	90		

Clear Splint Biocryl	
0.5mm	20
0.75mm	25
1mm	35
1.5mm	50
2mm	60
2.5mm	75
3mm	90

Super Imprelon*, Imprelon & Durasoft*	* Requires heat drying prior to use.
Super Imprelon .75mm	45
Super Imprelon 1mm	50
Imprelon 3mm Clear	80
Imprelon 3mm White	70
Durasoft 1.8mm	80
Durasoft 2.5mm	100

Miscellaneous	
Blue Heavy Weight 0.125 in/3mm	90
Pink Tray 0.080 in/2mm	60
Pink Base Plate 0.060 in/1.5mm	40
Coping Material 0.020 in/.5mm	50
Temporary Splint 0.020 in/.5mm	25

Invisacryl & Endure		
Invisacryl A 0.030 in/.75mm		25
Invisacryl A 0.040 in/1mm		35
Invisacryl B 0.025 in/.5mm		40
Invisacryl B 0.035 in/.8mm		60
Invisacryl C 0.040 in/1mm		70
Endure 0.030 in/.75mm		30
Endure 0.040 in/1mm		35

Copyplast, Hardcast & Isofolan		
Copyplast .5mm		30
Copyplast 1mm		50
Copyplast 1.5mm		70
Hardcast .4mm		45
Hardcast .6mm		50
Hardcast .8mm		75
Isofolan 0.10mm		25

Invisacryl Retainer Variety Pack

021-060

Try all three materials!

Invisacryl Retainer Pack includes four pieces each of Invisacryl A .040" 1mm/125mm, Invisacryl B .035" .8mm/125mm, and Endure® .040" 1mm/125mm.



Great Lakes Pumice

8 lbs.

Fine **230-001**
Medium **230-003**
Coarse **230-005**

40lbs.

Fine **230-002**
Medium **230-004**
Coarse **230-006**



Fabulustre

For final high lustre finishing of metals and plastics.

1 lb. block

230-008



Lab Kool Torque

145-008

Versatile air-driven handpiece. Stays cool even at speeds of 55,000 r.p.m. Vibration-free operation, variable speeds, high torque. Quick disconnect feature for convenient portability. Automatic turbine lubrication from foot pedal.

Includes chucking tools.



Red Wing Lathe

180-001

Dynamically balanced. No "bench creep"- stays cool. Permanently lubricated ball bearings totally enclosed in dust-proof housing. 1/4 h.p., 2 speeds. This is the only lathe our laboratory will use.

4" shaft height illustrated; 6" shaft height available.

With Quick-Chuck Installed **180-002**



Appliance Finishing Kit

010-005

Everything you need to finish an appliance.

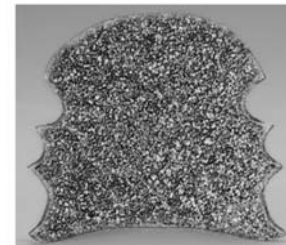
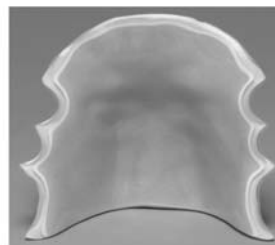
Includes:

- DIMO Grinding & Finishing Wheels - PRO
- Loose Muslin Buff
- Plastic Center Rag Wheel
- Tripoli
- Fabulustre

Applications for Thermal Forming Materials

Retainers

A retainer is used primarily to stabilize an ideally aligned dentition at the completion of orthodontic treatment. A basic retainer includes an acrylic base plate, wire clasps, and a labial bow.



Summer Shades Biocryl 2mm/125mm

Cool Orange	10/pkg.	021-086
Sky Blue	10/pkg.	021-089
Coral Red	10/pkg.	021-087
Fresh Limon	10/pkg.	021-090
Hot Pink	10/pkg.	021-088

Green, Round

2mm/95mm	10/pkg.	020-013
2.5mm/95mm	10/pkg.	020-014
3mm/95mm	9/pkg.	020-015
2mm/125mm	10/pkg.	021-010
2.5mm/125mm	10/pkg.	021-011

Light Blue, Round

2mm/95mm	10/pkg.	020-001
2.5mm/95mm	10/pkg.	020-002
3mm/95mm	9/pkg.	020-003
2mm/125mm	10/pkg.	021-001
3mm/125mm	9/pkg.	021-003

Glitter Biocryl 2mm/125mm

Opalescent	10/pkg.	021-091
Radiant Red	10/pkg.	021-077
Pacific Blue	10/pkg.	021-078
Starlight Silver	10/pkg.	021-080
Emerald Green	10/pkg.	021-079
Multicolor	10/pkg.	021-081
Assorted	10/pkg.	021-076

Purple, Round

2mm/95mm	10/pkg.	020-016
2.5mm/95mm	10/pkg.	020-017
2mm/125mm	10/pkg.	021-013
2.5mm/125mm	10/pkg.	021-014

Pink, Square

2mm/125mm	10/pkg.	025-004
2.5mm/125mm	10/pkg.	025-003
3mm/125mm	9/pkg.	025-005

Patterned Biocryl 2mm/125mm

Rainbow	10/pkg.	021-072
Tiger	10/pkg.	021-071
Polka Dot	10/pkg.	021-074
Zebra	10/pkg.	021-073
Desert Camouflage	10/pkg.	021-069
Assorted	10/pkg.	021-075

Red, Round

2mm/95mm	10/pkg.	020-019
2.5mm/95mm	10/pkg.	020-020
3mm/95mm	9/pkg.	020-021
2mm/125mm	10/pkg.	021-016
2.5mm/125mm	10/pkg.	021-017

Pink, Round

2mm/95mm	10/pkg.	020-005
2.5mm/95mm	10/pkg.	020-004
3mm/95mm	9/pkg.	020-006
2mm/125mm	10/pkg.	021-004
2.5mm/125mm	10/pkg.	021-005
3mm/125mm	9/pkg.	021-006

Biocryl

Dark Blue, Round

2mm/95mm	10/pkg.	020-007
2.5mm/95mm	10/pkg.	020-008
3mm/95mm	9/pkg.	020-009
2mm/125mm	10/pkg.	021-007
2.5mm/125mm	10/pkg.	021-008
3mm/125mm	9/pkg.	021-009

Yellow, Round

2mm/95mm	10/pkg.	020-022
2.5mm/95mm	10/pkg.	020-023
2mm/125mm	10/pkg.	021-019

Assorted Colors, Round

2mm/95mm	10/pkg.	020-025
2mm/125mm	10/pkg.	021-022

Light Blue, Square

2mm/125mm	10/pkg.	025-001
3mm/125mm	9/pkg.	025-002

Splint Biocryl

Clear, Square

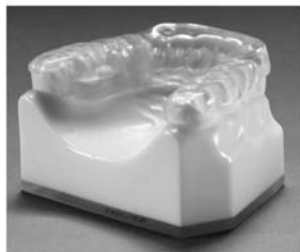
2mm/125mm	10/pkg.	025-010
3mm/125mm	9/pkg.	025-011

Clear, Round

2mm/95mm	10/pkg.	020-010
2.5mm/95mm	10/pkg.	020-011
3mm/95mm	9/pkg.	020-012
2mm/125mm	10/pkg.	021-027
2.5mm/125mm	10/pkg.	021-028
3mm/125mm	9/pkg.	021-029

Splints

Splints are designed to alleviate temporomandibular disorders. A splint can improve muscle imbalance and malposition of the dental occlusion by providing stabilization.



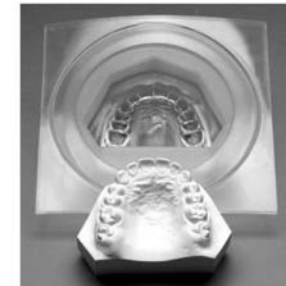
Soft Splints/Nightguards

A soft splint or a nightguard is a removable acrylic interocclusal appliance worn at night to prevent or reduce dental wear resulting from bruxism.



Model Duplication

A model may need to be duplicated for appliance construction or to create a matrix for multiple pours.



Splint Biocryl

Clear, Square		
1.5mm/125mm	15/pkg.	025-009
2mm/125mm	10/pkg.	025-010
3mm/125mm	9/pkg.	025-011

Clear, Round		
1.5mm/125mm	15/pkg.	021-026
2mm/125mm	10/pkg.	021-027
2.5mm/125mm	10/pkg.	021-028
3mm/125mm	9/pkg.	021-029

Imprelon

Clear, Round		
3mm/125mm	10/pkg.	030-006

Durasoft (soft/hard material)*

Clear, Square		
1.8mm/125mm	10/pkg.	035-001
2.5mm/125mm	10/pkg.	035-027

Clear, Round		
1.8mm/125mm	10/pkg.	030-001
2.5mm/125mm	10/pkg.	030-027

*Pre-dry in Biostar® Drying Oven.

Durasoft (Pre-dried)

Clear, Round		
1.8mm/125mm	10/pkg.	030-030
2.5mm/125mm	10/pkg.	030-031

Bioplast®

Clear, Square		
2mm/125mm	10/pkg.	035-011
3mm/125mm	10/pkg.	035-012

Clear, Round		
2mm/125mm	10/pkg.	030-010
3mm/125mm	10/pkg.	030-011

Miscellaneous

Bioplast Insulator .5 liter		175-068
Perlibond 20ml		175-032
Osamu-bond Bonding Agent 10ml		175-031
Spacer Foam, Square	40/pkg.	021-051
Spacer Foam, Round	40/pkg.	021-092
Polyester Mesh (5 sq. ft.)		090-040
Pink Tray, Round .080"	25/pkg.	021-050
Blue Heavy Weight, Round .125"	25/pkg.	021-047
Coping Material, Round .020"	25/pkg.	021-057
Packaging Foil 125mm White	100/pkg.	030-018
Isofolan, Round 0.10mm/125mm	100/pkg.	030-002
Pink Baseplate, Round .060"	25/pkg.	021-048

Mouthguard Material

Clear, Square		
2mm/125mm	10/pkg.	025-013
3mm/125mm	9/pkg.	025-014
4mm/125mm	10/pkg.	025-015

Clear, Round		
2mm/125mm	10/pkg.	021-031
3mm/125mm	9/pkg.	021-032
4mm/125mm	10/pkg.	021-049



Lead Pellets (Left Photo)

5 lbs. (10 fl. oz. bottle) **010-095**

Stainless Steel Pellets (Left Photo)

2.2 lbs. (13 fl. oz. bottle) **010-099**

Composite Pellets (Right Photo)

1.1 lbs. (10 fl. oz. bottle) **010-122**

Custom Trays

A custom impression tray is used to transport the impression material to the mouth, confine the material next to the surfaces to be recorded, and control the material while it sets to form the impression.



Imprelon

White, Round		
3mm/125mm	10/pkg.	030-028

Heavy Weight*

Blue, Square		
3mm/125mm	25/pkg.	025-031

Blue, Round		
3mm/125mm	25/pkg.	021-047

Tray Handles

Clear	10/pkg.	010-096
-------	---------	---------

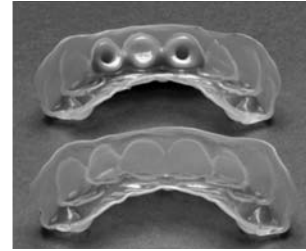
Spacer Foam

Square	40/pkg.	021-051
Round	40/pkg.	021-092

*Always used with Spacer foam.

Temporaries

A temporary appliance can be fixed or removable and is intended to be used only until a permanent appliance is fabricated.



Copyplast

Square		
.5mm/125mm	10/pkg.	035-016
1mm/125mm	10/pkg.	035-017

Round		
.5mm/125mm	10/pkg.	030-013
1mm/125mm	10/pkg.	030-014
1.5mm/125mm	10/pkg.	030-029

Hardcast

Square		
.4mm/125mm	10/pkg.	035-021
.6mm/125mm	10/pkg.	035-022
.8mm/125mm	10/pkg.	035-023

Round		
.4mm/125mm	10/pkg.	030-020
.6mm/125mm	10/pkg.	030-021
.8mm/125mm	10/pkg.	030-022

Temporary Splint

Square		
.020"	25/pkg.	025-038

Round		
.020"	25/pkg.	021-082

Bleaching Trays

A bleaching tray is used to transport fluoride or bleaching agents to the mouth, confine the material next to the surfaces to be treated, and control the material during treatment.



Copyplast

Square		
1mm/125mm	10/pkg.	035-017

Round		
1mm/125mm	10/pkg.	030-014
1.5mm/125mm	10/pkg.	030-029

Mouthguard Material

Clear, Square		
1mm/125mm	12/pkg.	025-012

Clear, Round		
1mm/125mm	12/pkg.	021-030

Bioplast®

Clear, Square		
1.5mm/125mm	10/pkg.	035-010

Clear, Round		
1.5mm/125mm	10/pkg.	030-009

Invisible Retainers

An invisible retainer is an active toothmoving appliance used for minor tooth alignment defined as no more than correction of 2 teeth per arch, within 1mm of movement.



Endure®

Clear, Square		
.030"	25/pkg.	025-045
.040"	25/pkg.	025-046

Clear, Round		
.030"	25/pkg.	021-058
.040"	25/pkg.	021-059

Invisacryl A

Clear, Square		
.030"	100/pkg.	025-040
.040"	100/pkg.	025-041

Clear, Round		
.030"	100/pkg.	021-052
.040"	100/pkg.	021-053

Invisacryl B

Clear, Square		
.025"	100/pkg.	035-024
.035"	100/pkg.	035-025

Clear, Round		
.025"	100/pkg.	030-023
.035"	100/pkg.	030-024

Invisacryl C

Clear, Square		
.040"	100/pkg.	025-043

Clear, Round		
.040"	100/pkg.	021-056

Splint Biocryl

Clear, Square		
.5mm/125mm	40/pkg.	025-006
.75mm/125mm	30/pkg.	025-007
1mm/125mm	25/pkg.	025-008
1.5mm/125mm	15/pkg.	025-009

Clear, Round		
.5mm/125mm	40/pkg.	021-023
.75mm/125mm	30/pkg.	021-024
1mm/125mm	25/pkg.	021-025
1.5mm/125mm	15/pkg.	021-026

Hardcast

Square		
.4mm/125mm	10/pkg.	035-021
.6mm/125mm	10/pkg.	035-022
.8mm/125mm	10/pkg.	035-023

Round		
.4mm/125mm	10/pkg.	030-020
.6mm/125mm	10/pkg.	030-021
.8mm/125mm	10/pkg.	030-022

Super Imprelon*

Clear, Square		
.75mm/125mm	10/pkg.	035-009
1mm/125mm	10/pkg.	035-008

Clear, Round		
.75mm/125mm	10/pkg.	030-008
1mm/125mm	10/pkg.	030-007

*Pre-dry in Biostar® Drying Oven.

Indirect Bonding Trays

Used in a two-step procedure called indirect bonding for bracket placement, the tray preserves the pre-determined orientation of the brackets and allows them to be bonded simultaneously.



Bioplast®

Clear, Square		
1.5mm/125mm	10/pkg.	035-010
2mm/125mm	10/pkg.	035-011

Clear, Round		
1.5mm/125mm	10/pkg.	030-009
2mm/125mm	10/pkg.	030-010

Mouthguard Material

Clear, Square		
1mm/125mm	12/pkg.	025-012
2mm/125mm	10/pkg.	025-013

Clear, Round		
1mm/125mm	12/pkg.	021-030
2mm/125mm	10/pkg.	021-031

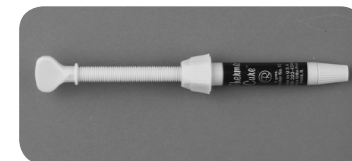
Splint Biocryl

Clear, Square		
1.5mm/125mm	15/pkg.	025-009
2mm/125mm	10/pkg.	025-010

Clear, Round		
1.5mm/125mm	15/pkg.	021-026
2mm/125mm	10/pkg.	021-027

Therma-Cure®

065-033 5g
Heat curable lab adhesive for indirect bonding. Bonds all metal, ceramic, and plastic brackets



Mouthguards/Positioners

A mouthguard is a removable appliance used to cover and protect teeth during contact sports. A positioner is a removable appliance used to achieve fine adjustments and retain corrected positions following fixed appliance treatment.

Mouthguard Material

<i>Clear, Square</i>		
2mm/125mm	10/pkg.	025-013
3mm/125mm	9/pkg.	025-014
4mm/125mm	10/pkg.	025-015

<i>Clear, Round</i>		
2mm/125mm	10/pkg.	021-031
3mm/125mm	10/pkg.	021-032
4mm/125mm	10/pkg.	021-049

<i>Purple, Square</i>		
2mm/125mm	10/pkg.	025-016
3mm/125mm	10/pkg.	025-017

<i>Purple, Round</i>		
2mm/125mm	10/pkg.	021-033
3mm/125mm	10/pkg.	021-034

<i>Green, Square</i>		
2mm/125mm	10/pkg.	025-018
3mm/125mm	10/pkg.	025-019

<i>Green, Round</i>		
2mm/125mm	10/pkg.	021-035
3mm/125mm	10/pkg.	021-036

<i>Red, Square</i>		
2mm/125mm	10/pkg.	025-020
3mm/125mm	10/pkg.	025-021

<i>Red, Round</i>		
2mm/125mm	10/pkg.	021-037
3mm/125mm	10/pkg.	021-038

<i>Orange, Square</i>		
2mm/125mm	10/pkg.	025-022
3mm/125mm	10/pkg.	025-023



<i>Orange, Round</i>		
2mm/125mm	10/pkg.	021-039
3mm/125mm	10/pkg.	021-040

<i>Blue, Square</i>		
2mm/125mm	10/pkg.	025-024
3mm/125mm	10/pkg.	025-025

<i>Blue, Round</i>		
2mm/125mm	10/pkg.	021-041
3mm/125mm	10/pkg.	021-042

<i>Yellow, Square</i>		
2mm/125mm	10/pkg.	025-026
3mm/125mm	10/pkg.	025-027

<i>Yellow, Round</i>		
2mm/125mm	10/pkg.	021-043
3mm/125mm	10/pkg.	021-044

<i>Assorted Colors, Square</i>		
2mm/125mm	10/pkg.	025-028
3mm/125mm	10/pkg.	025-029

<i>Assorted Colors, Round</i>		
2mm/125mm	10/pkg.	021-045
3mm/125mm	10/pkg.	021-046

<i>Black, Square</i>		
3mm/125mm	10/pkg.	025-030

<i>Black, Round</i>		
3mm/125mm	10/pkg.	021-054



<i>White, Square</i>		
3mm/125mm	10/pkg.	025-042

<i>White, Round</i>		
3mm/125mm	10/pkg.	021-055

Bioplast®

<i>Clear, Square</i>		
2mm/125mm	10/pkg.	035-011
3mm/125mm	10/pkg.	035-012

<i>Clear, Round</i>		
2mm/125mm	10/pkg.	030-010
3mm/125mm	10/pkg.	030-011

<i>Clear Yellow, Round</i>		
2mm/125mm	10/pkg.	030-012

<i>Clear Blue, Round</i>		
2mm/125mm	10/pkg.	030-016

Multi-Color Bioplast®

<i>Assorted, Round</i>		
3mm/125mm	10/pkg.	030-025

<i>Red, White & Blue, Round</i>		
3mm/125mm	10/pkg.	030-026



Bioplast Insulator

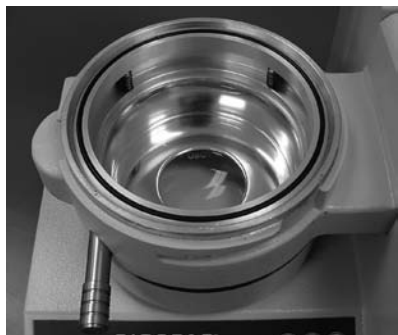
175-068

Insulating agent for plaster models when working with Bioplast material when fabricating mouthguards and positioners. Provides absolute transparency and smooth inner surfaces. .5 Liter

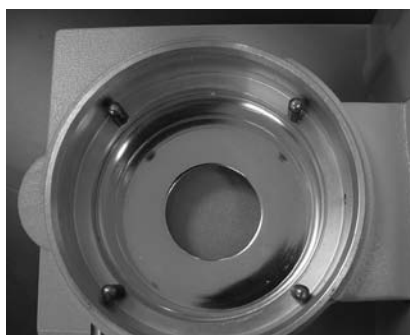
Biostar® Troubleshooting Tips

Use the following tips to address:

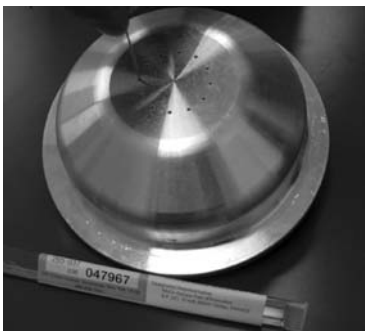
- Air leaks
- Poor adaptation
- Material heating unevenly
- Blowouts
- Material thinning
- Mounted model too high for pellet cup



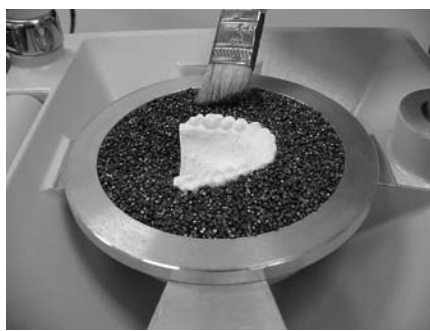
If gasket does not move freely, remove it and clean with a small amount of liquid dish soap applied and removed with a dry paper towel. Lubricate pins and springs and replace gasket.



Remove pins and springs. Lubricate with a small amount of Mobil premium food grade machinery grease. Replace pins and springs and insert gasket. Depress gasket ring once or twice to make sure it moves freely.



Remove pellets from cup, make sure the 12 air escape holes are not plugged. Use a .036" diameter or smaller wire to open plugged holes.



Make sure all pellets are removed from edge of cup where the chamber locks into place. Pellets should be even with top of pellet cup.

If Air Leaks Occur, Perform a Cold Test:

- Turn unit on. Clamp a sheet of 2mm or thicker hard material onto pressure chamber. Secure clamping frame.
- DO NOT HEAT material. Swing the pressure chamber over the model platform. Activate air pressure.
- If you hear an air leak, contact your customer service representative.



Make sure the heating surface is parallel to the heating element. See the Biostar manual to adjust.



For mounted models, remove the majority of pellets. Leave only enough under the model to allow air to flow. Build up the pellets, leaving exposed only the area to be covered by acrylic material.



Call Great Lakes
Products Customer
Service at
800-828-7626 with
any questions.

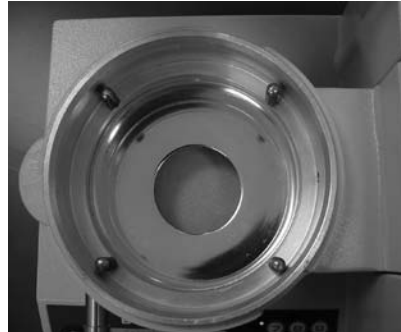
MiniSTAR S® Troubleshooting Tips

Use the following tips to address:

- Air leaks
- Poor adaptation
- Material heating unevenly
- Blowouts
- Material thinning
- Mounted model too high for pellet cup



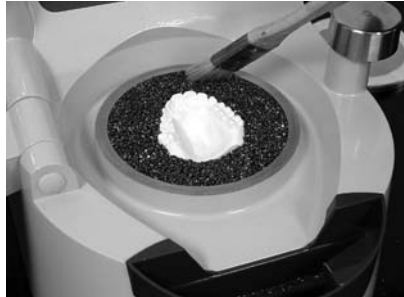
If gasket does not move freely, remove it and clean with a small amount of liquid dish soap applied and removed with a dry paper towel. Lubricate pins and springs and replace gasket.



Remove pins and springs. Lubricate with a small amount of Mobil premium food grade machinery grease. Replace pins and springs and insert gasket. Depress gasket ring once or twice to make sure it moves freely.



Remove pellets from cup, make sure the 12 air escape holes are not plugged. Use a .036" diameter or smaller wire to open plugged holes.



Make sure all pellets are removed from edge of cup where the chamber locks into place.



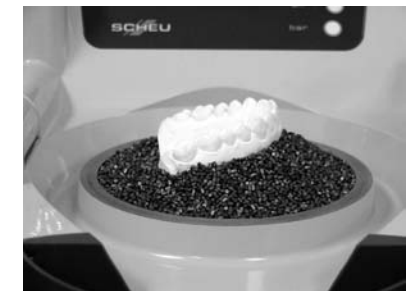
Pellets should be even with top of pellet cup.



Make sure the heating surface is parallel to the heating element. See MiniSTAR S manual to adjust.

If Air Leaks Occur, Perform a Cold Test:

- Turn unit on. Clamp a sheet of 2mm (or thicker) hard material onto pressure chamber. Secure clamping frame.
- Enter 5 seconds heating time. Swing the heating element over the material to activate heat. Immediately return heating element to rest position.
- Swing pressure chamber over the model platform. Activate air pressure.
- If you hear an air leak, contact your customer service representative.



For mounted models, remove the majority of pellets. Leave only enough under the model to allow air to flow. Build up the pellets, leaving exposed only the area to be covered by acrylic material.



Great Lakes

ORTHODONTICS, LTD.

An Employee Owned Company

200 Cooper Avenue

Tonawanda, New York 14150

Toll Free: 1-800-828-7626

Fax: 716-871-0550

Web Site: www.greatlakesortho.com